

Test Report

No. SH8035444-1/ CHEM

Date: Mar. 25, 2008

Page 1 of 6

3M CHINA LIMITED
222# TIAN LIN ROAD, SHANGHAI (200233)

THIS REPORT IS TO SUPERSEDE TEST REPORT NO.SH8035444/CHEM DATE: 2008/03/24

The following sample(s) was/were submitted and identified by/on behalf of the client as:

Sample Name : 3M VHB WITH 100MP ADHESIVE, F-9460PC, F-9463PC, F-9469PC,F-9473PC,4905,4910
SGS Ref No. : 10909807
Part No. : 4905
Sample may cover : 100 MP SERIES

Sample Receiving Date : Mar.19, 2008
Testing Period : Mar.19 – 22, 2008

Test Requested : (1-1)To determine Cadmium, Lead and Mercury content in the submitted sample.
(1-2)To determine Hexavalent Chromium content in the submitted sample.
(1-3)To determine PBBs/PBDEs content in the submitted sample.
(2) To determine the Halogen- Fluorine, Chlorine, Bromine, Iodine Content in the submitted sample.

Test Method : (1-1) With reference to US EPA Method 3052 for Cadmium, Lead and Mercury content for sample.
Analysis was performed by ICP
(1-2) With reference to US EPA Method 3060A & 7196A for Hexavalent Chromium content for sample.
Analysis was performed by UV/Vis Spectrometry.
(1-3) With reference to US EPA Method 3540C/3550C for PBBs / PBDEs content.
Analysis was performed by GC-MS.
(2) With reference to EN 14582: 2007.
(2-1)Determination of Fluorine by Ion Chromatograph (IC) method.
(2-2)Determination of Chlorine by Ion Chromatograph (IC) method.
(2-3)Determination of Bromine by Ion Chromatograph (IC) method.
(2-4)Determination of Iodine by Ion Chromatograph (IC) method.

Test Results : Please refer to next pages

Signed for and on behalf of
SGS-CSTC Chemical Laboratory



Ella Zhang
Section Manager

Signed for and on behalf of
SGS-CSTC Chemical Laboratory



Sandy Hao
Lab Manager

Test Report

No. SH8035444-1/ CHEM

Date: Mar. 25, 2008

Page 2 of 6

Test results by chemical method: (Unit: mg/kg)

(1) the Cadmium, Lead, Mercury, Hexavalent Chromium, PBBs (Polybrominated biphenyls) PBDEs (PBDEs) (Polybrominated biphenyl ethers) Content

Test Item(s)	1	Unit	MDL
Cadmium (Cd)	ND	mg/kg	2
Lead (Pb)	ND	mg/kg	2
Mercury (Hg)	ND	mg/kg	2
Hexavalent Chromium (Cr VI)	ND	mg/kg	2
Sum of PBBs	ND	mg/kg	--
Monobromobiphenyl	ND	mg/kg	5
Dibromobiphenyl	ND	mg/kg	5
Tribromobiphenyl	ND	mg/kg	5
Tetrabromobiphenyl	ND	mg/kg	5
Pentabromobiphenyl	ND	mg/kg	5
Hexabromobiphenyl	ND	mg/kg	5
Heptabromobiphenyl	ND	mg/kg	5
Octabromobiphenyl	ND	mg/kg	5
Nonabromobiphenyl	ND	mg/kg	5
Decabromobiphenyl	ND	mg/kg	5
Sum of PBDEs	ND	mg/kg	--
Monobromobiphenyl ether	ND	mg/kg	5
Dibromobiphenyl ether	ND	mg/kg	5
Tribromobiphenyl ether	ND	mg/kg	5
Tetrabromobiphenyl ether	ND	mg/kg	5
Pentabromobiphenyl ether	ND	mg/kg	5
Hexabromobiphenyl ether	ND	mg/kg	5
Heptabromobiphenyl ether	ND	mg/kg	5
Octabromobiphenyl ether	ND	mg/kg	5
Nonabromobiphenyl ether	ND	mg/kg	5
Decabromobiphenyl ether	ND	mg/kg	5

Test Report

No. SH8035444-1/ CHEM

Date: Mar. 25, 2008

Page 3 of 6

(2) Halogen- Fluorine, Chlorine, Bromine, Iodine Content

<u>Test Item(s):</u>	<u>Method (refer to)</u>	<u>1</u>	<u>MDL</u>
Fluorine(F)	(2-1)	ND	50
Chlorine(Cl)	(2-2)	ND	50
Bromine(Br)	(2-3)	ND	50
Iodine(I)	(2-4)	ND	50

Test Part Description:

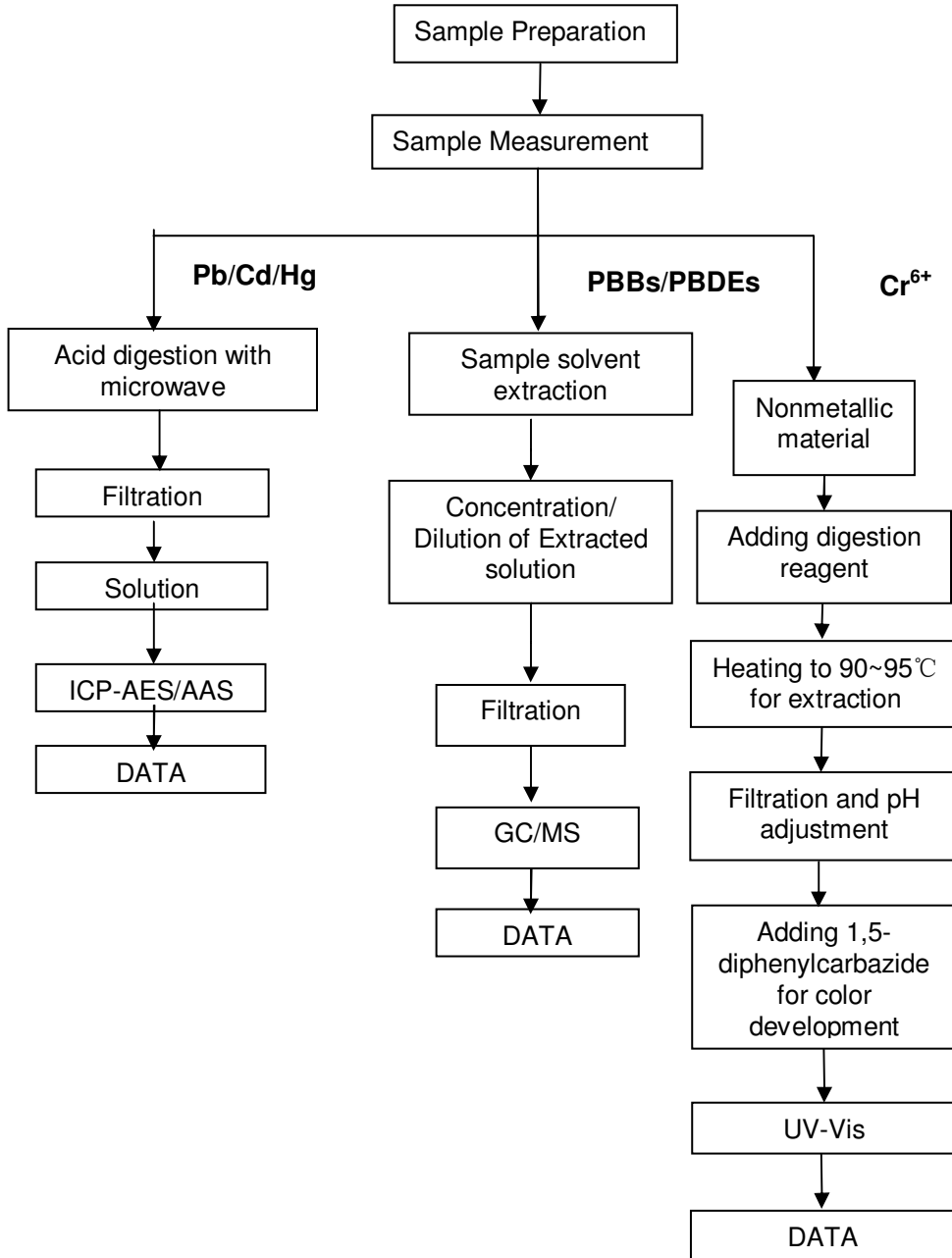
1. Transparent plastic film with adhesive part (in the middle)

Note:

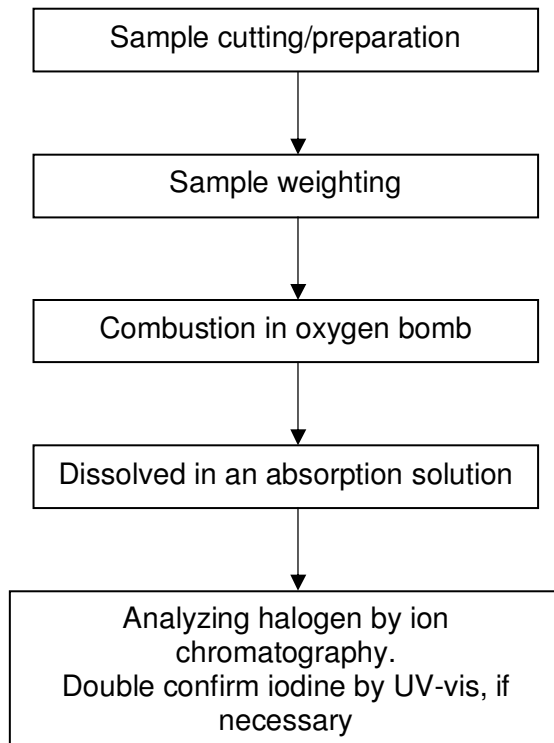
- (1) mg/kg = ppm
- (2) MDL = Method Detection Limit
- (3) ND = Not detected (Less than MDL)

ATTACHMENTS

- 1) Name of the person who made measurement: Cathy Cai/George Xu/Diane Wang
- 2) Name of the person in charge of measurement: Terry Wang/Tracy Yue

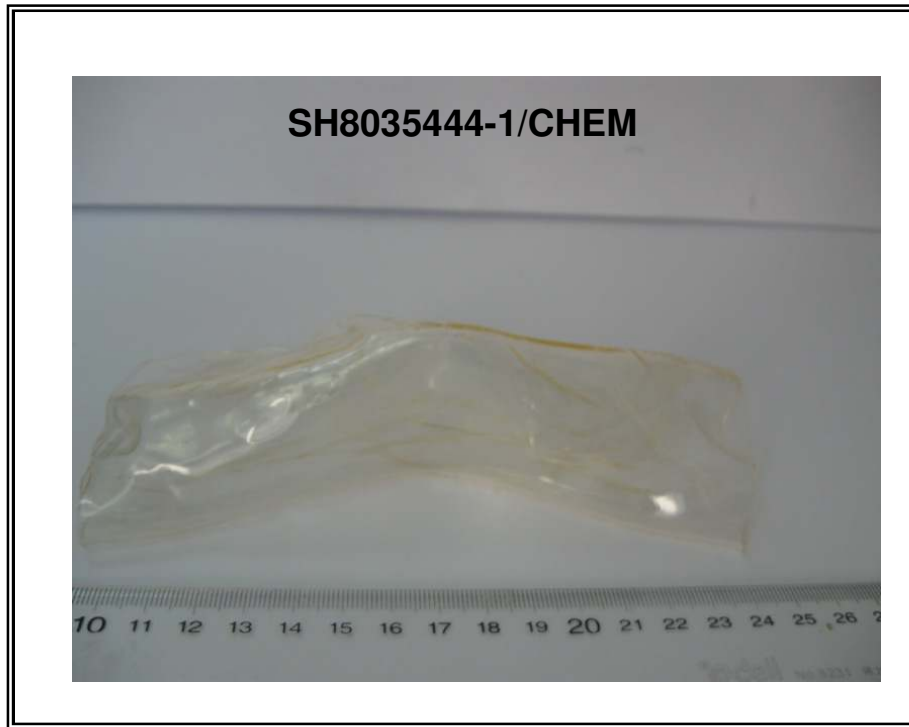


Halogen Measurement Flowchart for sample



Tested by : Daisy Gong
Checked by : Alex Jiang

Sample photo:



SGS authenticate the photo on original report only

*** End of Report ***